

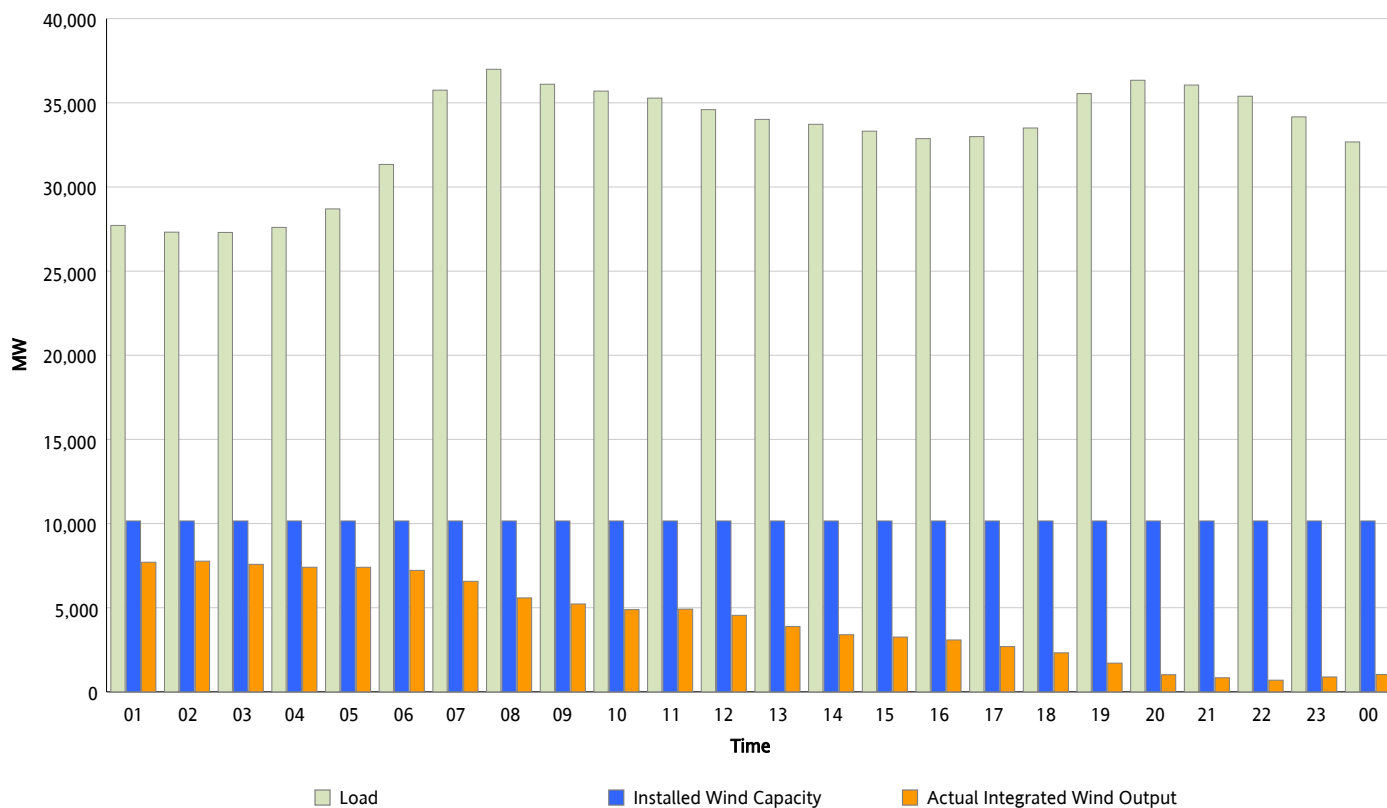


ERCOT Grid Operations

Wind Integration Report : 02/15/2013

Peak Load	36,993 MW
Load Peak Hour (HE)	08
Wind Over Peak	5,583 MW
Wind Record 02/09/13	9,481 MW
Max Wind Value*	7,904 MW
Wind Peak Time	01:38
Wind Integration %	28.82 %

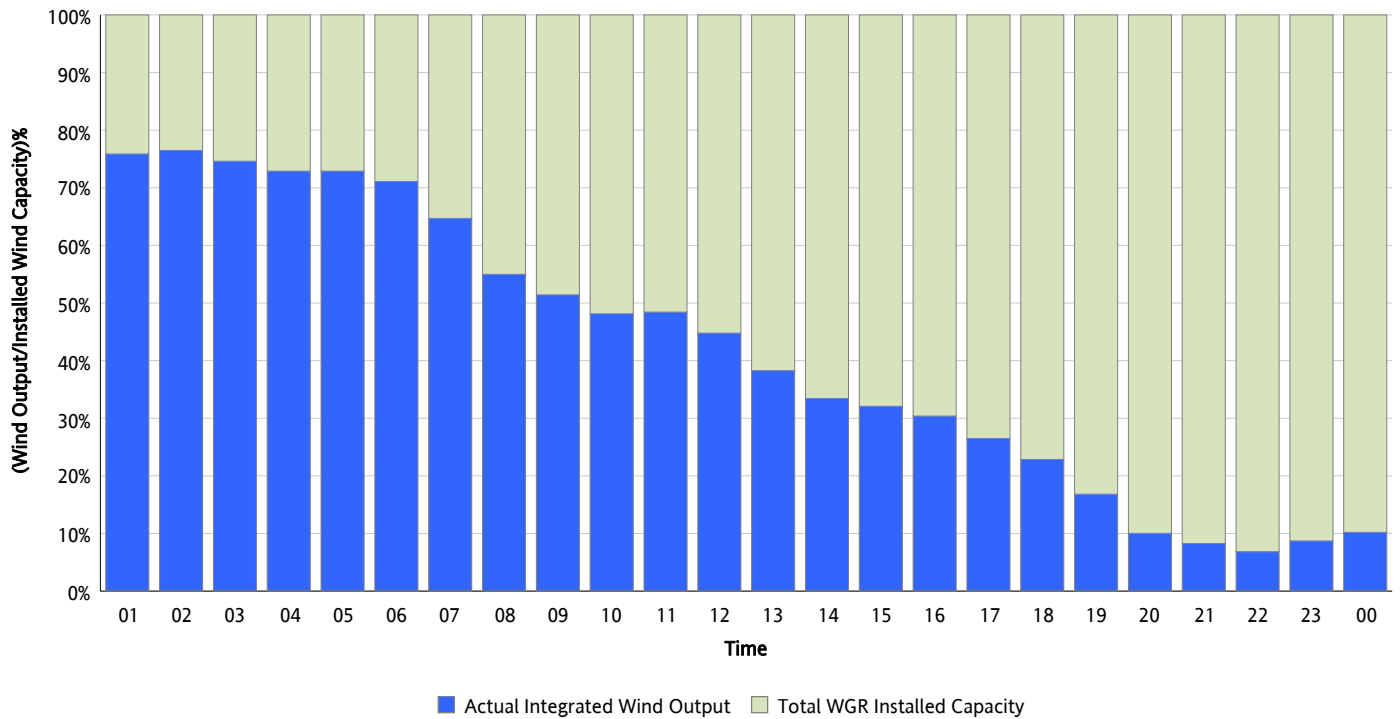
Hourly Average Actual Load vs. Actual Wind Output
02/15/2013



* Wind Record and Wind Max represent instantaneous values and the rest of the values are integrated over the hour

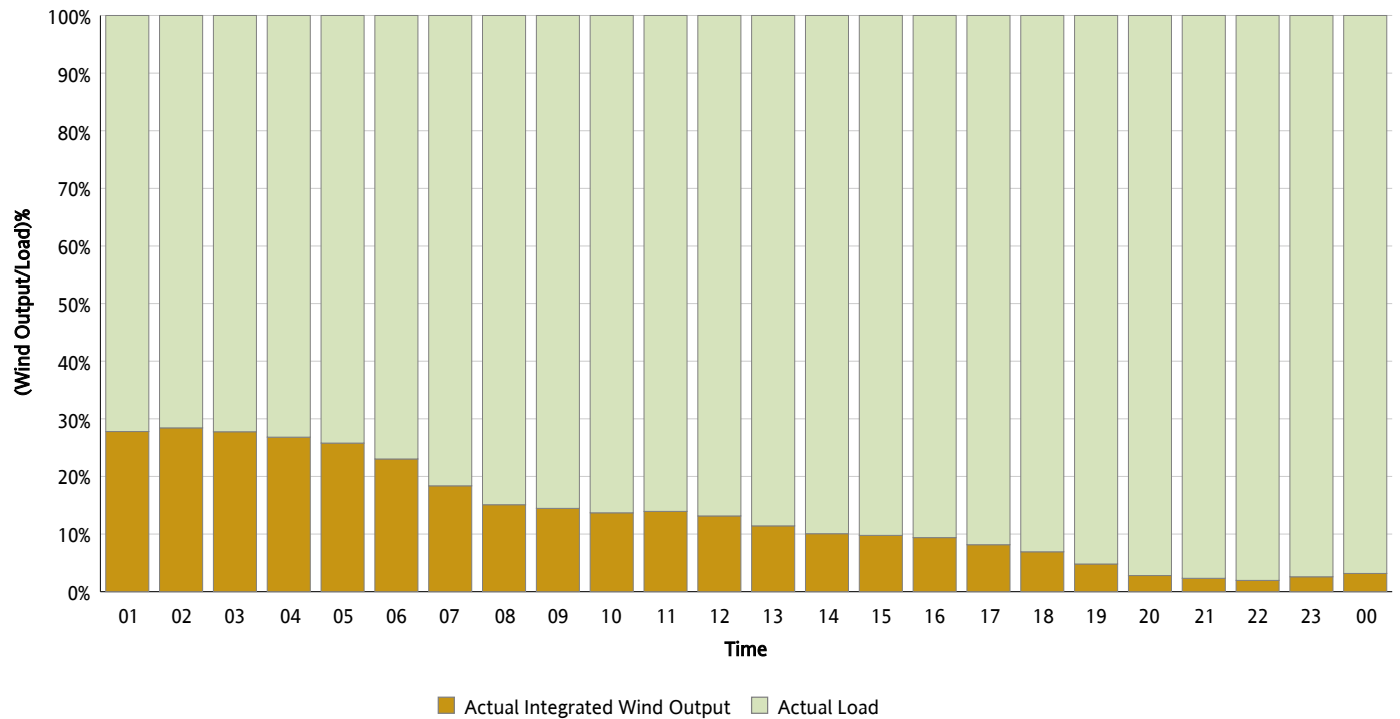
Actual Wind Output as a Percentage of the Total Installed Wind Capacity

02/15/2013



Actual Wind Output as a Percentage of the ERCOT Load

02/15/2013



ERCOT Load vs. Actual Wind Output

02/08/2013 - 02/15/2013

